





*"In this life we cannot do great things.  
We can only do small things with great love."*

*Mother Teresa*





# LENAWEE COMMUNITY FOUNDATION

## Mission

The mission of the Lenawee Community Foundation is to enhance the quality of life of the citizens of Lenawee County, Michigan through permanent endowments by:

- ◆ *Identifying and addressing current and anticipated community needs and*
- ◆ *Raising, managing and distributing the funds for charitable purposes in the areas of civic, cultural, health, educational and social services.*



The Lenawee Community Foundation assists individuals, businesses, communities and organizations in achieving their charitable goals.

You can:

- ◆ Address health, civic, culture, education or social service needs.
- ◆ Utilize a wide variety of giving options and receive maximum tax benefits now or through your estate plan.
- ◆ Benefit from the Foundation's personalized service, local expertise and community leadership.
- ◆ Make gifts that last *for good for ever.*

## Table of Contents

Message from the Chair of the Board and President & CEO	4
Funds	5
Grants and Scholarships	11
Lenawee YOUTH Council	16
Health Across Lenawee	17
Hunters Helping Lenawee	17
The Lenawee Leadership Award	18
Lenawee Imagination Library	18
Charity Ball Festival of Trees	19
VOLUNTEER Lenawee!	20
List of Contributors	21
The Legacy Society	26
Building a Better Community	29
Financial Position	30
Acknowledgments	31



## Message From the Chair of the Board and President & CEO

---

No matter who we are, we all want to make a difference.

Sometimes a difference is made through our time, sometimes through talent, sometimes through treasure, and sometimes any combination of the three. But sometimes we feel our resources aren't enough, our talent is insufficient, or we're too busy to adequately address a community issue. John F. Kennedy stated it best, when he said "One person can make a difference and every person should try."

What if there was someone who really understood that giving is not just about money? Someone who honors your values and carries out your wishes. Someone who shares your passion for our community. Someone who will assist you in fulfilling your charitable wishes, while also considering your family.

That 'someone' is the Lenawee Community Foundation. We exist to assist individuals, businesses, organizations, and communities in achieving their charitable goals. Take a look through this annual report to see how donors from all walks of life are making a difference in partnership with the Lenawee Community Foundation.

Together we:

- Awarded grants & scholarships exceeding \$1,500,000 -- more than any other nongovernmental organization.
- Strengthened our community with initiatives such as the Imagination Library, Lenawee YOUTH Council, VOLUNTEER Lenawee! and Health Across Lenawee.
- Worked to build a brighter future through permanently endowed gifts from which earnings will benefit Lenawee "*for good for ever.*"

Our commitment to you is:

- Honoring your values and wishes with little or no impact on the inheritance for your heirs.
- Assuring your gifts are used wisely by utilizing sound financial and investment strategies, meeting national standards, and receiving an annual audit that documents a clean opinion.
- Sharing your passion for our community, and assisting you with fulfilling your charitable goals.

What do you care about? What organizations do you currently support through your time, talent and treasure? What will be your legacy for your family and our community?

We'd love to help you explore the possibilities!



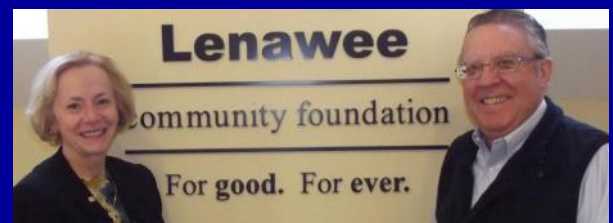
David S. Hickman  
Chair of the Board



Suann D. Hammersmith  
President & CEO



Confirmed in Compliance with the National  
Standards for U.S. Community Foundations.



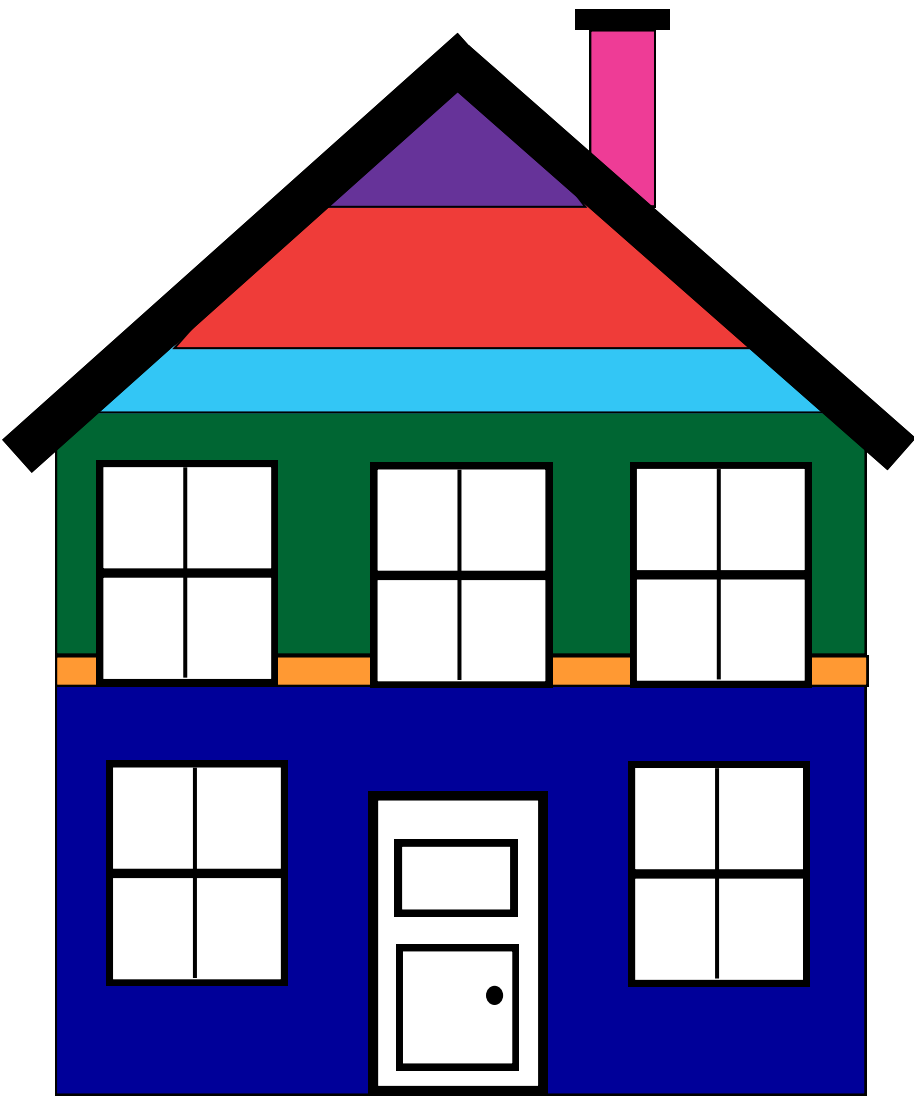
# Funds within the Lenawee Community Foundation

Existing funds may be utilized for gifts, or donors may establish new funds in the Lenawee Community Foundation. Funds are categorized in seven areas: Lenawee, Lenawee Leadership, Field of Interest, Donor Advised, Designated, Lenawee Community Projects and Scholarships.

There are several ways to establish funds to meet the charitable interests and financial circumstances of individuals, businesses and organizations. A commitment of \$10,000 is required to establish a fund, however gifts in any amount are accepted for existing funds.

*A named fund can be established in your name, a business or organization name, the name of a person you wish to honor, or the name of a person for whom you wish to create a lasting memory.*

## Lenawee Community Foundation Fund Values by Fund Type



Community Project Funds - 4%  
\$756,459

Donor Advised Funds - 5%  
\$794,431

Designated Funds - 11%  
\$1,839,456

Charitable Gift Annuities, Real Estate, & Life Insurance - 5%  
\$759,672

Scholarship Funds - 26%  
\$4,415,075

Lenawee and Lenawee Leadership Funds - 1%  
\$189,342

Field of Interest Funds - 48%  
\$8,042,639

*Following is a description of each type of fund and a list of the funds. Gifts to the Lenawee Community Foundation, a 501(c)(3) organization, and any of its funds qualify for federal tax deductions, according to the Internal Revenue Code.*

# Funds within the Lenawee Community Foundation (continued)

## Lenawee Fund

The Lenawee Fund is a multi-purpose, flexible endowed fund to meet current and emerging needs. Donors may choose the Lenawee Fund if they believe that a group of living individuals will always be better able to assess current situations than a document from the past. This fund is designed to meet emerging community needs, respond to change, create innovative approaches and enhance the quality of life in Lenawee County. After the Lenawee Community Foundation Board of Directors evaluates all aspects of community well-being, grants are given by the Lenawee Community Foundation Board to areas of greatest need.

## Lenawee Leadership Fund

This non-endowed fund has been established to provide support for current community needs or support for the Lenawee Community Foundation's administration or leadership role in the Lenawee County community. Disbursements are made by the Community Foundation Board.

## Field of Interest Funds

A Field of Interest Fund allows a donor to support a broad area, such as health, youth, the arts, services to seniors, economic development or whatever charitable issue the donor chooses. Donors may also support their home community, where local advisory committees make recommendations for grants. A personal interest area is identified when the gift is made, and then the Lenawee Community Foundation Board of Directors makes grants to community agencies and programs that are making a difference in the area that has been selected.

Addison Area Fund

Adrian Area Fund

Blissfield Area Fund

Britton-Macon Area Fund

Clinton Area Fund

Cultural Endowment Fund

Deerfield Area Fund

Early Childhood Development Fund

Patrick Gill Empty Bowls Fund

Health Endowment Fund

Healthy Youth Healthy Seniors Fund

Ralph F. Helzerman, M.D. Endowment Fund

Herrick Endowment Fund

Hudson Area Fund

Kellogg Youth Fund

V.C. & Velma Knight Memorial Fund

Lenawee College Access Endowment Fund

Morenci Area Fund

Onsted Area Fund

George W. Romney Fund for Volunteerism

Sand Creek Area Fund

Ruth V. & Ruth Anne Thompson Fund

Youth Endowment Fund



***“During 2012 the Lenawee Community Foundation helped the Food Bank of South Central Michigan distribute 708,570 pounds of food to 15 Lenawee non-profit organizations. The value of this distribution is \$1.14 million!”***

**Dan Salerno,  
Director of Fund Development,  
Food Bank of South Central Michigan**



## Community Project Funds

These non-endowed funds support temporary or special projects in Lenawee County such as capital improvements, youth programs or the arts.

Adrian Area Chamber of Commerce Fund

Adrian Area Soccer Club Fund

Adrian Dirtbags Funds

Adrian First Fridays Fund

City of Adrian Public Art Fund

Adrian Inter-Club Council Fund

Alexander Playground Fund

Art-A-Licious Fund

Athena Aid Fund

Athena Lenawee Fund

Blissfield Community Girl Scouts Fund

Blissfield Community Playground Fund

Blissfield Foundation for Educational Excellence Fund

Blissfield Main Street Program Fund

Blissfield Rotary Club Fund

Blissfield Scout Cabin Fund

Boys and Girls Club of Lenawee Capital Projects Fund

Boys and Girls Club of Lenawee Student Assistance Fund

The Breast Cancer Awareness Fund

Britton-Deerfield Area School Capital Projects Fund

Charity Ball Festival of Trees Fund

Community Arts of Tecumseh Fund

Deerfield American Legion Fund

Deerfield Community Improvement Fund

Friends of the Adrian Public Library Fund

Friends of Historic Blissfield Fund

Friends of Tecumseh Center for the Arts

Friends of the Tecumseh Schools Orchestra Fund

Friends of the Tecumseh Skate Park Fund

Greater Adrian Economic Development Fund

Homeless Education Fund

Hunters Helping Lenawee Fund

Imagination Library Fund

Lenawee College Access Network Operating Fund

Lenawee County Human Services Council Fund

Lenawee County Sobriety Court Fund

Lenawee Great Start Fund

Lenawee Lifelong Learning Fund

Madison Community Summer Softball Club Fund

Madison Funding for Athletic Needs (FAN) Fund

Bradford & Bronson Mansfield Memorial Golf Tournament Fund



Mirelez Living Legacy Music Scholarship Fund

Montessori Children's House of Lenawee Fund

Neighborhood Sharing Garden Fund

One Lenawee Fund

Patriot Youth Sports Fund

Rotary Club of Adrian Morning Fund

Mirelez Living Legacy Music Scholarship Fund

Montessori Children's House of Lenawee Fund

Neighborhood Sharing Garden Fund

One Lenawee Fund

Patriot Youth Sports Fund

Rotary Club of Adrian Morning Fund

Tecumseh Coalition for Youth Fund

Tecumseh Historic Carnegie Library Fund

Tecumseh Pops Orchestra Fund

Weekend Snack Sack Fund

Kassie Wingerd Scholarship Fund

Zonta Service Fund

# Funds within the Lenawee Community Foundation (continued)

## Donor Advised Funds

**A** Donor Advised Fund allows the donor to have ongoing involvement in the use of gifts. Donors share insights and make recommendations regarding potential grant recipients. The donor's suggestions must be reviewed and approved by the Community Foundation Board. A Donor Advised Fund acts much like a private foundation, however it is easier to establish, less expensive to operate and less restrictive in distributions, payouts and investments.

Brazeway, Inc. Fund

Hardwoods of Michigan Fund

Dr. Carlton and Lynn Cook Charitable Fund

Scott & Cynthia Hill Charitable Fund

Frank & Shirley S. Dick Endowment Fund

Maxwell Family Fund

Downing Family Charitable Fund

The Brenda Ross Fund

Ernest & Susan Groeb Charitable Fund

Roto-Durst Charitable Fund

## Designated Funds

**A** Designated Fund allows contributors to specify charities as the recipients of their gifts, thereby providing those organizations with a perpetual stream of income from the fund. Nonprofit organizations may also establish designated, endowed funds with the investment earnings distributed back to the nonprofit.

Adrian Schools Excellence in Teaching and Mentoring Fund

Adrian Symphony Orchestra Endowment Fund

Blissfield Foundation for Educational Excellence Fund

Britton-Deerfield Schools Endowment Fund

Catholic Charities of Lenawee Endowment Fund

Clinton Community Schools Endowment Fund

Communities in Schools of the Tecumseh Area Endowment Fund

Community Action Agency Endowment Fund

Friends of the Southern Michigan Railroad Society Endowment Fund

Grandma Dull's Kindergarten Fund

Goodwill Industries of Southeastern Michigan Endowment Fund

David & Shelley Hickman Endowment Fund for the Lenawee Community Foundation

Robert & Marjorie Hodapp Fund

HOPE Community Center Endowment Fund

Thomas & Ellen Hummel Adrian Area Fund

Lenawee Community Mental Health Authority Endowment Fund

Lenawee County Education Foundation Endowment Fund

Lenawee County Fair & Event Grounds Endowment Fund

Ralph & Hazel Leonard Charitable Fund

Tecumseh Center for the Arts Endowment Fund

Madison School District Endowment Fund

Tecumseh District Library Endowment Fund

Onsted Community Schools Endowment Fund

Tecumseh Schools Endowment Fund

Raisin Valley Land Trust Fund

Robert & Albert Ward Todd Endowment

Sand Creek Community Schools Endowment Fund

YMCA of Lenawee Endowment Fund





## Scholarship Funds

Scholarship Funds enhance education by providing scholarships. Scholarships can support nonprofit preschool through high school education, or further the education of graduates of a particular high school, students in a specified field of study, students meeting specific criteria or students enrolled in a chosen institution.

For application information, see contacts listed with each scholarship.

### Florence Bridleman Scholarship Fund

Adrian High School, 517.266.4532

### Britton-Deerfield Schools

Chuck Pelham, 517.451.4581

- General Scholarship Fund
- Golden Apple Scholarship Fund
- Sam Hamilton Scholarship Fund
- Shirley Todd Herrick Scholarship Fund
- Charles Komon Memorial Scholarship Fund
- Mary & Joseph Kormos Memorial Scholarship Fund
- Peter Krzyzewski Memorial Scholarship Fund
- Max Larsen Scholarship Fund
- Amanda Stevens Scholarship Fund
- Joan Downing Wood Scholarship Fund



### Citizens Gas Scholarship Fund

Paula Trentman, 517.424.6569

### Clinton Community Schools

David Pray, 517.456.6501

- Danelle's Scholarship Fund
- Robison Scholarship Fund
- Truesdale/York Scholarship Fund
- Willard D. Van Tuyle & Mary K. Van Tuyle Scholarship Fund

### Bernice, Harry & Marda Gene Duncan Scholarship Fund

Paula Trentman, 517.424.6569

### Kindinger Scholarship Fund

Carolyn Bloodworth, 517.788.0432

### LandS Aviation Scholarship Fund

Paula Trentman, 517.424.6569

### Bertha LaPointe Scholarship Fund

Kerry Hamilton-Smith, 517.424.7318

### Lenawee County Education Foundation

[www.lenaweecef.org](http://www.lenaweecef.org)

Janet McDowell, 517.265.1626

- Adrian Woman's Club – Thelma Swigert Memorial Scholarship Fund
- Eric Brandeberry Memorial College Scholarship Fund
- Jacqueline Long Carson Scholarship Fund
- Lucy Wolcott Barnum Chapter D.A.R. Scholarship Fund
- Fab 4 Scholarship Fund
- Fairfield Chapter #224 OES, Thelma Swigert Memorial Scholarship Fund
- Fleur de Lis Scholarship Fund
- Francoeur Scholarship Fund
- Richard Germond Scholarship Fund
- Patricia & Joseph Koszka Memorial Scholarship Fund

*"Thank you for  
supporting my  
generation to further  
their education."*

RaeLynne MacBeth

# Funds within the Lenawee Community Foundation (continued)

## Scholarship Funds

### Lenawee County Education Foundation (continued)

- Lenawee County Association of Realtors Scholarship Fund
- Lawn Family Scholarship Fund
- Matthew D. Lips Memorial Scholarship Fund
- Bradford and Bronson Mansfield Scholarship Fund
- Rex and Mary Martin Scholarship Fund
- Walter J. & Leota ("Tom") R. McNeil Scholarship Fund
- Pauline and Sebastian Pizaña Memorial Scholarship Fund
- Poppink Scholarship Fund
- Lloyd W. Ruesink Memorial Scholarship Fund
- Stubnitz Scholarship Fund - Arts
- Stubnitz Scholarship Fund - Engineering
- Charles H. & Glenna M. Tipton Scholarship Fund
- John Wyatt Sr. Memorial Community Service Scholarship Fund
- Joan and Lysle Yeutter Scholarship Fund



### Otto & Marian Meier Scholarship Fund

Paula Trentman, 517.424.6569

### Jack & Edith Ries Memorial Scholarship Fund

Paula Trentman, 517.424.6569

### James J. Robideau Memorial Scholarship Fund

Paula Trentman, 517.424.6569

### Sand Creek Community Schools

- Bailey/Ries Memorial Scholarship Fund
- Harley & Velma Benfield Scholarship Fund
- Leland C. & Mary E. Buckles Memorial Scholarship Fund
- John T. Keenan Scholarship Fund
- Sand Creek Communications Scholarship Fund

Sharon Smith, 517.436.3108

### Alvin & Clara Schwab Scholarship Fund

Paula Trentman, 517.424.6569

### Tecumseh Area Soccer Club Scholarship Fund

Dave Smith, 517.423.2848

### Tecumseh Schools Foundation

- Bedore Scholarship Fund
- Boltz Scholarship Fund
- Buttolph Scholarship Fund
- Eleanor Johnson Scholarship Fund
- Gerald D. Nelson Scholarship Fund

Kerry Hamilton-Smith, 517.424.7318

### Wildcat Athletic Boosters Memorial Scholarship Fund

Paula Trentman, 517.424.6569

*Jennifer came to the Adrian Rea Literacy Center knowing little English. Because of her great motivation to learn, and the support of tutors, Jennifer has advanced three levels in her reading and writing skills and improved her ability to express herself in English. Now she attends parent teacher conferences, and proudly says, "I am my own translator."*

Adrian Rea Literacy Center

# Grants and Scholarships

October 1, 2011 through September 30, 2012

## Lenawee Leadership Fund

### Health Across Lenawee

Adrian Public Library	\$700	
City of Adrian - Farmer's Market	1,016	
Art-A-Licious	500	
HOPE Community Center	7,500	
Hunters Helping Lenawee	1,000	
LISD TECH Center Food Summit	1,000	
Maple Youth Club	1,530	
Neighborhood Sharing Garden	2,000	
Shultz Holmes Memorial Library	700	
Tecumseh Acres Elementary School	1,200	
Weekend Snack Sacks	1,522	
Volunteer Generation Program	31,368	
YMCA of Lenawee	<u>682</u>	\$50,718



### Lenawee Community Foundation Fund

Boys and Girls Club of Lenawee	6,400	
Council on Foundations	<u>1,030</u>	<u>7,430</u>

### Total Lenawee Leadership Funds

**\$58,148**

## Field of Interest Funds

Clinton Area Fund - Clinton Community Schools \$500

Patrick Gill Empty Bowls Fund - Food Bank of South Central Michigan for local food pantries 250

### Kellogg Youth Fund

Adrian Area Soccer Club - Scholarships	500
Associated Charities of Lenawee - Back to School	1,000
Catholic Charities of Lenawee - Roadmap to Graduation	1,000
Communities in Schools of Lenawee - Conflict Resolution, Onsted	500
Family Counseling and Children's Services - Catherine Cobb Shelter	800
Habitat for Humanity of Lenawee - LISD TECH Center Build	1,000
Lenawee Community Foundation - Youth Leadership & Council	1,393
Lenawee Substance Abuse Prevention Coalition - Above the Influence	600
Lenawee Medical Care Facility - Partnership of Love	350
Madison High School - Prom for Students with Special Needs	200
Morenci Summer Recreation	500
Stair Public Library - Summer Reading Program	1,000
Tecumseh District Library - Tart Club	600
Tecumseh Youth Theatre - Theatrical Productions	300
Upward Bound	<u>950</u>



**\$10,693**



## Grants and Scholarships (continued)

### Field of Interest Funds (continued)

Onsted Area Fund		
Onsted Kiwanis—Youth In Government	\$500	
Cambridge Township Fire Department	<u>500</u>	\$1,000
 Ruth V. and Ruth Anne Thompson Fund		
A.J. Smith Recreation Center	8,541	
Lenawee Economic Development Corporation	3,145	
ProMedica Herrick Hospital Foundation	<u>165,881</u>	<u>\$177,567</u>
 <b>Total Field of Interest Funds</b>		<b><u>\$190,010</u></b>

### Designated Funds

Adrian Schools Excellence in Teaching and Mentoring Fund	\$7,500
Adrian Symphony Orchestra Endowment Fund	5,785
Goodwill Industries of Southeastern Michigan Fund	50,000
Lenawee Community Foundation Programs	158,937
Lenawee County Education Foundation Endowment Fund	3,326
Robert & Albert Ward Todd Endowment - Tecumseh Center for Arts	<u>13,939</u>
<b>Total Designated Funds</b>	<b><u>\$239,487</u></b>

### Donor Advised Funds

Frank & Shirley S. Dick Endowment Fund	\$274,300
Downing Family Charitable Fund	3,000
Ernest & Susan Groeb Charitable Fund	9,600
Scott and Cynthia Hill Charitable Fund	1,000
Maxwell Family Fund	7,150
The Brenda Ross Fund	5,594
Roto-Durst Charitable Fund	<u>10,300</u>
<b>Total Donor Advised Funds</b>	<b><u>\$310,944</u></b>

*Grant recipients from Donor Advised Funds included: Adrian Symphony Orchestra, Croswell Opera House, Hospice of Lenawee, Jackson Community College, Lenawee Community Foundation, Lenawee County Historical Society, Lenawee Economic Development Corporation, Siena Heights University and others.*





### Lenawee Community Project Funds

Adrian Area Chamber of Commerce Fund		\$7,900
Adrian Area Soccer Club Fund		190
Adrian Dirtbags Funds		9,073
Adrian First Fridays Fund		1,094
Adrian Inter-Club Council Fund		
St. Mary's Food Pantry	\$500	
Salvation Army	<u>500</u>	1,000
Alexander Playground Fund		71
Art-A-Licious		30,290
Athena Aid Fund - Scholarships		1,500
Athena Lenawee Fund - Leadership Program		10,082
Blissfield Community Girl Scouts		10,021
Blissfield Main Street Fund		19,355
Boys & Girls Club of Lenawee Capital Projects Fund		224,679
The Breast Cancer Awareness Fund - ProMedica Herrick Hospital Foundation		16,481
Charity Ball Festival of Trees		84,000
Community Arts of Tecumseh Fund		15,000
Friends of the Adrian Public Library		1,805
Friends of Tecumseh Schools Orchestra Fund		9,330
Greater Adrian Economic Development Fund - Lenawee Economic Development Corp.		50,000
Homeless Education Fund		4,000
Hunters Helping Lenawee		\$1,320



*"Gifts and grants like these truly make it possible for us to not only help change lives, but to sometimes even save lives."*

Sharon Hudson  
Family Counseling and Children's Services

## Grants and Scholarships (continued)

### Lenawee Community Project Funds (continued)

Imagination Library Fund	\$37,475
Lenawee County Sobriety Court	4,854
Lenawee Great Start Fund	2,000
Lenawee Lifelong Learning	737
Neighborhood Sharing Garden	1,095
One Lenawee Fund	32,000
Patriot Youth Sports	18,172
Rotary Club of Adrian Morning Fund	1,510
Tecumseh Firefighters Foundation	5,842
Tecumseh Historic Carnegie Library Fund	4,705
Zonta Service Fund	10,143
Miscellaneous Fund Distributions	<u>19,923</u>

**Total Lenawee Community Projects Funds** **\$635,647**

### Scholarship Funds

Florence Bridleman Scholarship Fund	\$12,000
Britton-Deerfield Schools	
Golden Apple Scholarship Fund	\$125
Charles Komon Memorial Scholarship Fund	<u>500</u> 625
Clinton Community Schools	
Danelle's Scholarship Fund	250
Robison Scholarship Fund	5,000
Willard D. VanTuyle & Mary K. VanTuyle Scholarship Fund	<u>4,000</u>
	9,250
Kindinger Scholarship Fund	1,000
Bertha LaPointe Scholarship Fund	3,750
Lenawee County Education Foundation	
Adrian Woman's Club - Thelma Swigert Memorial Scholarship	500
Eric Brandeberry Memorial College Scholarship Fund	\$3,500



*"Thank you and the Lenawee Community foundation for all you do to make our area a great place to live."*

Community Arts of Tecumseh

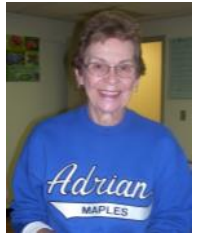




## Grants and Scholarships (continued)

### Lenawee County Education Foundation (continued)

Lucy Wolcott Barnum Chapter D.A.R. Scholarship Fund	\$1,500	
Fab 4 Scholarship Fund	500	
Fairfield Chapter #224 OES, Thelma Swigert Memorial Scholarship Fund	750	
Francoeur Scholarship Fund	1,000	
Richard Germond Scholarship Fund	500	
Patricia & Joseph Koszka Memorial Scholarship Fund	500	
Lenawee County Association of Realtors Scholarship Fund	1,000	
Bradford & Bronson Mansfield Scholarship Fund	1,000	
Rex & Mary Martin Scholarship Fund	250	
Walter J. & Leota ("Tom") R. McNeil Scholarship Fund	2,000	
Pauline & Sebastian Pizaña Memorial Scholarship Fund	500	
Poppink Scholarship Fund	1,000	
Lloyd W. Ruesink Memorial Scholarship	500	
Stubnitz Scholarship Fund - Arts	3,500	
Stubnitz Scholarship Fund - Engineering	4,500	
Charles H. & Glenna M. Tipton Scholarship Fund	1,000	
John Wyatt Sr. Memorial Community Service Scholarship Fund	500	
Joan & Lysle Yeutter Scholarship Fund	<u>1,000</u>	<u>\$25,500</u>
Otto & Marian Meier Scholarship Fund		2,500
James J. Robideau Memorial Scholarship Fund		1,000
Alvin & Clara Schwab Scholarship Fund		2,000
Tecumseh Area Soccer Club Scholarship Fund		3,000
Tecumseh Schools Foundation		
Bedore Scholarship Fund	500	
Boltz Scholarship Fund	400	
Buttolph Scholarship Fund	5,000	
Eleanor Johnson Scholarship Fund	1,500	
Gerald D. Nelson Scholarship Fund	<u>4,000</u>	<u>11,400</u>
Wildcat Athletic Booster Memorial Scholarship Fund		1,500
Scholarships from other Funds		<u>9,730</u>
<b>Total Scholarship Funds</b>		<b><u>83,255</u></b>



**TOTAL FOR ALL FUNDS**

**\$1,517,491**

# Lenawee YOUTH Council



Lenawee is building fantastic leaders! And, many of these amazing young people are members of the Lenawee YOUTH Council. The members lead and participate in Youth Leadership, conduct a grant process for the Kellogg Youth Fund, and volunteer to make our Lenawee community a better place.

During the past year the Lenawee YOUTH Council:

- ☑ Assisted with the Above the Influence program.
- ☑ Volunteered with the Lenawee College Access Network.
- ☑ Taught other youth about the value of philanthropy and volunteerism.
- ☑ Worked with the Adrian Noon Rotary to sell Christmas trees and wreaths to benefit youth programs.
- ☑ Volunteered on Martin Luther King Jr. Day, Global Youth Service Day, 9/11 Day of Remembrance and Make A Difference Day.

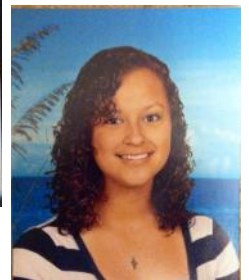
In addition to many more volunteer activities, members from seven school districts granted \$10,000 to 13 local youth-serving organizations. The Lenawee YOUTH Council members worked hard to make good decisions. They read and evaluated requests, asked tough questions, decided which needs were most important, reached consensus on funding decisions and presented their grant recommendations to the Lenawee Community Foundation Board of Directors for approval. For a complete list of the Kellogg Youth Fund grants see page 11.

## LENAWEE YOUTH COUNCIL MEMBERS

Matthew Baucher ~ Alison Carpenter ~ Seth Cline ~ Charlotte Coberley ~ Emma Coberley ~ Katelyn Coberley ~ Cristina Cote ~ Nicole Cote ~ Taylor Deters ~ Amy Dewald ~ Mark Dewald ~ Trevor Dopp ~ Jacqueline Dominguez ~ Elissa Gillin ~ Alissa Hamilton ~ Taylor Jones ~ Tala McGee ~ Kitten Miller ~ Jacob Mock ~ Paige Mock ~ Marianna Morin ~ Carson Musolf ~ Carson Musolf ~ Sydney Myers ~ Christina Pasternak ~ Janelle Pasternak ~ Foster Reynard ~ Alissa Reeder ~ Jennifer Saxton ~ Nicole Saxton ~ Ryan Schanz ~ Rebecca Schoonover ~ Jacob Trentman ~ Lauren Trumbull ~ Juley Turpening ~ Marissa Valdez ~ Isabel Valdez ~ Raquel Valdez ~ Nick Vasquez ~ Spenser Warren



*Spenser Warren & Charlotte Coberley, members of the Lenawee YOUTH Council, serve as Youth Representatives on the Lenawee Community Foundation Board of Trustees.*



*Lenawee YOUTH Council members, Lauren Trumbull (left) & Nicole Cote serve as Youth Representatives on the Lenawee County Education Foundation Board of Directors.*

"As I observed our young patient's children playing on the floor with the games, I realized that these (simple) items were allowing a sense of normalcy - 'feeling at home'. Even as these kids were watching their father slip away, they could be near him and still feel things were OK. "

**Hospice of Lenawee  
Grant recipient from the Lenawee YOUTH Council**



## Health Across Lenawee

Thanks to a generous grant for Health Across Lenawee from the Michigan Community Service Commission, the Lenawee Community Foundation sponsored or contributed to the following programs focusing on improving health.



- Iron Chef Competitions at the Adrian Public Library and Schultz Holmes Library in Blissfield
- Weekend Snack Sacks provided to needy children at Adrian Public Schools and Madison Schools
- New kitchen floor, washer and dryer for HOPE Community Center
- Healthy Food Summit with the Culinary Arts Students at the LISD TECH Center
- Coupons for low income individuals to purchase fresh produce at the Adrian Farmers Market
- Development and support of community gardens in Adrian
- Canned Food Art Festival to support local food pantries and programs



*"The grant money for the garden is such a blessing! So many new people are involved this year and are so excited."*

Linda,  
Neighborhood Sharing Gardens



## Hunters Helping Lenawee

Hunters Helping Lenawee is a program of the Lenawee Community Foundation that provides venison to local food pantries. Last year local hunters donated over 2,400 meals for people in need.

We are grateful to the hunters, who donated their deer for processing at Jerome Market and Kasper's Hickory House and to the donors, who contributed to Hunters Helping Lenawee to cover the processing costs.



## Lenawee Leadership Award

The Lenawee Leadership Award was presented to Gary and Janet McDowell by the Lenawee Community Foundation. The award honors individuals or couples, who exemplify the underlying principle that the future of our county will be determined by the quality of its leadership.

Formerly known as the Maple Leaf Award, the prestigious award was renamed The Lenawee Leadership Award to acknowledge the county-wide focus, and encompass all aspects of the quality of life in Lenawee. The award mirrors the Lenawee Community Foundation mission to enhance the quality of life of the citizens of Lenawee in the areas of civic projects, culture, health, education, and social services. Former recipients of the Maple Leaf Award, beginning with Maurice Stubnitz in 1953, continue to be recognized as recipients of the new award.

The award was sponsored by Consumers Energy in honor of their 125<sup>th</sup> anniversary of service in Michigan.



## Lenawee Imagination Library

The Lenawee Imagination Library delivered over 18,000 books last year to children ages zero to five. Lenawee children, who were enrolled in the program, received a new book mailed to them at their home each month. The cost was approximately \$30 per year for each of the 1,600 children, who get to keep the books they receive. This program is made possible through generous donations from local civic clubs, individuals, foundations, corporations and families.

# Charity Ball Festival of Trees

**Presenting Sponsor**  
ProMedica & ProMedica Bixby and  
Herrick Hospitals

**Philanthropy Sponsors**  
Shirley Herrick  
Farver Foundation  
Ernie & Susan Groeb  
Sage Foundation

**Dinner & Wine Sponsors**  
Shirley Herrick  
Frank & Shelley Dick  
Dave & Shelley Hickman  
J. Peter & Kristin Longabaugh

## **Artists & Tree Designers**

Adrian College Art Club  
Adrian High School Art Students  
Pi Benio, Adrian College Professor of Art & Design  
Ryan Bills, Adrian High School Art Instructor  
Stephanie Clark, Barrett's Showplace Gardens  
Dot Connett  
James Freeman  
Sue Hammersmith, Lenawee Imagination Library  
Shelley Hickman, Lenawee Imagination Library  
Cheri Hinkleman  
Annie Howard, Adrian High School Art Instructor  
Denise Lambes, Glendale Flowers and Gifts  
Lenawee Community Foundation  
Andrea Miller, Adrian High School Art Instructor  
Helen Miller, Flowers and Such  
Tom Miller, Total Logic Metal  
Theresa Powers  
Mike Sohikian, R. Mike Sohikian LTD Metal Sculptor  
Ken Thompson, Flatlanders  
Dawn Wallen, Indigo Dawn Studios



The Lenawee Community Foundation and Kappa Kappa Epsilon (KKE) Sorority collaborated to host the second annual Charity Ball Festival of Trees, held at the Lenawee Country Club. We are grateful to the sponsors, attendees, purchasers of the exquisite Christmas trees or pieces of art, and Jerry Anderson, auctioneer extraordinaire. Steering committee members included Holleigh Baker, Sara Bingham, Sue Goldsen, Sue Hammersmith, Dave & Shelley Hickman, Sandy Mitchell and Kris Schmidt.



# VOLUNTEER Lenawee!



Have you visited <http://volunteer.lenaweecf.org>?

Are you looking for something to do? Do you have a skill to share or one you're looking to build upon? Are you a good listener? Do you have an hour to spend mentoring a local student or reading to community youth? Do you enjoy organizing things?

Last year VOLUNTEER Lenawee! mobilized hundreds of volunteers impacting the areas of education, the environment, emergency preparedness & recovery, youth, families, military personnel, veterans and more. These volunteers served thousands of hours, contributing hundreds of thousands of dollars of service to our community.

Visit us today. VOLUNTEER Lenawee!

**To get involved or find community resources:**

- ☒ Visit us at <http://volunteer.lenaweecf.org>.
- ☒ Contact us at 517-423-1729.
- ☒ E-mail us at [jfoster@ubat.com](mailto:jfoster@ubat.com) or [ptrentman@ubat.com](mailto:ptrentman@ubat.com).
- ☒ Visit our office at 603 North Evans Street in Tecumseh.



Lenawee YOUTH Council members hung 147 t-shirts, representing each of the 147 persons who died from tobacco-related illnesses, on clothesline outside of the Lenawee County Human Services building.

VOLUNTEER Lenawee! receives support from Volunteer Centers of Michigan, Michigan Nonprofit Association, Michigan Community Service Commission, the George W. Romney Fund for Volunteerism and generous individual donors.



# List of Contributors

October 1, 2011 through September 30, 2012

## Adrian Area Chamber of Commerce Fund

Jacobs Plastics, Inc.

## Adrian Area Fund

Daniel & Amy Deline  
Gregory & Deborah DuMars  
Samuel & Kathy Engardio  
Mark & LeeAnne Gasche  
Paul & Wendy Gietzen  
Rick & Jan Gurdjian  
Michael & Nancy Herr  
Mark & Mary Murray  
Arlo & Janice Qualley  
Paula Trentman

## Adrian Dirtbags Fund

Advantage Physical Therapy & Wellness  
American Legion Post #275  
Baker's Nook  
Blissfield Heating & Plumbing, Inc.  
Brian & Stephanie Boyse  
Marc Comstock  
CR Motors  
Deerfield Feed & Pet Supplies  
FASCO Employment, Inc.  
GVC Mortgage, Inc.  
Hoagie Man Deli  
Lightning Quick Gas Station  
Papa's Place  
Salsaria's  
Subway of Tecumseh  
Tip Top Tanning

## Adrian First Fridays

International Diamond & Gold of Adrian

## Adrian Inter-Club Council Fund

Adrian Breakfast Lions Club  
Carolyn Bater  
James & Rachel Becker  
Civitan of Lenawee  
Bridget Eisenhauer  
Inad & Liliane Haddad  
Brenda Huston  
Kiwanis Club of Adrian  
Gary & Charlotte Laskowsky  
Kurt Kominek & Meredith Matthews  
Rotary Club of Adrian Morning  
Clifford & Janet Smith III  
Harry Steele & Lisa Lambright  
Larry & Arlene Stephan  
Joshua & Jeanelle Wonders  
Zonta International Club of Lenawee

## City of Adrian Public Art Fund

Mitch & Dawn Blonde  
Gregory & Deborah DuMars  
Thomas & Marcia Faulhaber  
Martin Hammerstein, Jr.  
Mary Hammerstein



Karen McKeon  
Christopher & Joyce Miller  
Jeffrey & Mary Pardee  
Emory & Kristina Schmidt  
Robert & Pauline Shirk  
Paula Trentman & Jacob  
Robert & Anita Tripp

## Adrian Symphony Orchestra Endowment Fund

Primore, Inc.  
Arlo & Janice Qualley  
Thomas & Catherine Royer  
Robert & Audrey Sack  
Pat & Mary Vallad

## Alexander Playground Fund

Richard & Connie Bacus

## Art-a-Licious Fund

Adrian Downtown Development Authority  
Adrian Insurance Agency, Inc.  
Adrian Rotary Club  
Robert & Muriel Bell  
Tom Boldt & Jane Castle  
Dennis & Marjorie Castle  
Levi & Mary Beth Cottingham  
First Federal Bank  
John & Elfriede Georgal  
Mike Jacobitz & Pi Benio  
Kapnick Insurance Group  
KeyBank National Association  
Kiwanis Club of Adrian  
Lenawee Council for the Visual Arts  
Michigan Council for Arts & Cultural Affairs  
OmniSource  
Siena Heights University  
The Sound Doctor  
Maurice and Dorothy Stubnitz Foundation  
Don & Sharon Taylor  
Tc3Net  
United Bank & Trust  
West Pointe Party Shoppe  
Elizabeth Ruthruff Wilson Foundation

## Athena Lenawee Fund

Sara Bingham  
Michelle Brasseur  
Consumers Energy  
Dusty Farnam  
First Federal Bank  
Gleaner Life Insurance Society  
Bruce & Sue Goldsen  
Patt & Mary Helen Hayes  
David & Shelley Hickman  
Bill & Ann Knisel  
Stephen & Beverly Lyell  
Mary Ann McRobert  
Ed & Janis Montalvo  
ProMedica Health System  
Greg & Joy Smith  
United Bank & Trust  
WLEN Radio

## Blissfield Area Fund

James & Carol Stutzman

## Blissfield Community Girl Scouts Fund

Blissfield Area Lions Club  
Blissfield Community Girl Scouts  
Blissfield State Bank  
George & Kay Brown  
Gerald & Anne Lycans

## Blissfield Foundation for Educational Excellence Fund

Randy & Julie Brenke  
Harley & Lorraine Hodges  
William & Lora Stutzman

## Blissfield Main Street Program Fund

Adrian & Blissfield Rail Road Company  
Anonymous  
Bailey Family Chiropractic  
Blissfield Parts Co., Inc.  
Blissfield State Bank  
Carlton Developments LLC  
Miguel & Andrea Cueto  
D & N Upholstery, Inc.  
Michael & Doris Denudt  
Gwendolyn Dusa  
Margaret Goble  
The Gold Vault  
Michael Gunter  
Rick & Nancy Haefner  
Richard & Barbara Iott  
Randy & Jane Kelley  
Mary Kleindienst  
Knapp Chevrolet Buick  
Wonet Kulwicki  
Robert & Agatha Lombard  
Barbara McHenry  
Sandra Meeks  
Scott Moellenberndt  
Riley & Riley  
Elizabeth Seeburger  
Michael Sessions  
Eric Slusher Flooring  
Paul & Dorothy Steedle  
Jane Tuckerman  
Roberto & Kathleen Valdez  
Art & Mary Weeber  
William O. Warner Agency  
James Wonacott & Laura Neuman

## Boys & Girls Clubs of Lenawee Capital Projects Fund

Peg Albert  
Anonymous  
Robert & Muriel Bell  
Jeffrey & Delight Creech  
Bonnie Dunne  
Samuel & Kathy Engardio  
John & Julie Field  
James & Suann Hammersmith  
Carrie Hartley  
Stephen L. Hickman Family Foundation  
Scott & Cynthia Hill  
Dick & Karla Holmes  
Brian & Jennifer Hunter  
Kurt Kominek & Meredith Matthews  
Hazel Leonard  
West Mack  
James & Mary Martin  
David & Barbara Mitzel  
Dana Pink  
Russell & Darva Richhart  
Mark & Rachel Schaffner  
James Seaton  
Joe Ann Steele  
Maurice and Dorothy Stubnitz Foundation  
Jeffrey & Karen Vereecke  
Brad & Erin Watson  
Todd & Amy Wilson

## Breast Cancer Awareness Fund

Robert & Rosemary Price  
QuikTrac Logistics  
Rave Associates, Inc.



War-Ag Farm Services

## Britton Deerfield Schools - Charles Komon Memorial Scholarship

Allen & Nina Bower  
Lois Herr  
Larry & Judith Ivan  
Patricia Rogers  
Cal & Janet Rohrback

## Britton Deerfield Schools - General Scholarship Fund

Larry & Gail Ash  
Roger & Anne Bortel  
Donald & Wilnella Bush  
Frank Dick  
Polly Judd  
Charles & Joyce McLoughlin  
Marilyn Preston  
Urvin & Roberta Reau  
Mike & Brenda Servoss  
Marvin Stotler  
Women's Fellowship Britton

## Britton Deerfield Schools - Sam Hamilton Scholarship Fund

Philip Benedict

## Britton Deerfield Schools Endowment Fund

Tania Bundshuh  
Craig Gibbs  
Carin Tilley

## Catholic Charities of Lenawee Endowment Fund

James & Suann Hammersmith

## Charity Ball Festival of Trees Fund

Adrian Insurance Agency, Inc.  
Anderson Development Company  
Scott & Holleigh Baker  
Greg Bell Chevrolet Cadillac  
David & Jean Ann Berlin  
Patricia J. Clark  
Garry & Su Clift  
Carlton & Lynelle Cook  
Frank Dick  
Jeffrey & Elizabeth Docking  
Scott Doman, DDS  
Jennifer Ellsworth  
Annette Entinger  
J. F. Ervin Foundation  
The Farver Foundation  
John & Janis Foss  
Daniel & Janel Garno  
Raymond & Grace Garno  
Paul & Wendy Gietzen  
Gleaner Life Insurance Society  
Bruce & Sue Goldsen  
Charles & Patsy Graham  
Doug & Kathy Greenlee  
Ernie & Susan Groeb  
Gurdjian Insurance Group  
Rick & Jan Gurdjian  
James & Sue Hammersmith  
Hardwoods of Michigan  
James & Barbara Hazen  
Shirley Herrick  
Dick & Karla Holmes

## List of Contributors (continued)

Jon & Kathy Hoover  
Eleanor Hunt  
Robert & Karen Januszek  
Kapnick Insurance Group  
Dave Knapp Ford-Lincoln  
Julie Koehn & Tom Valentine  
Rosemary Kuhnert  
J. Peter & Kristin Longabaugh  
Dave & Jeanette Maxwell  
Thomas & Cindy McKeon  
Morning Fresh Bakeries, Inc.  
Emma Jean Poucher  
ProMedica Health System  
Randal & Jeanne Rabe  
Jeffrey Robideau Foundation  
Mark & Rachel Schaffner  
Emory & Kris Schmidt  
Terence & Jane Sheehan  
Ellsworth & Mary Stout  
Chris Tibbs  
United Bank & Trust  
Mike Watts  
Lorene Whitehouse  
Lisa Wilkie

### Clinton Area Fund

Dale & Liza Brooks

### Clinton Community Schools Endowment Fund

Dale Embry

### Community Action Agency Endowment Fund

Rex & Susan Reinink  
Francis & Debra Walker

### Community Arts of Tecumseh Fund

Scott & Pamela Adair  
Friedrich Consulting, Inc.  
Charles H. Gross  
David & Shelley Hickman  
Paul & Anita Lanczki  
Michael & Jean Lash  
Michael & Jane McKie  
Joseph & Martha Poppink Melcher  
Sage Foundation  
Schmidt & Sons Pharmacy  
Alan Snider  
Michael & Colleen Sunderland  
Tecumseh Big Boy, Inc.



Herald  
United Bank & Trust  
Wacker Chemical Corporation  
What A Find! Consign  
Elizabeth Ruthruff Wilson  
Foundation

### Deerfield Area Fund

John & Karla Bocskay  
Douglas & Cheryl Duval  
William & Marian Howard  
Nancy Malecki  
Lois Schadwald  
Doug & Ramona Scholl  
Mac & Marian Tennant  
James & Sandra Witt  
David & Rita Woods

### Frank & Shirley S. Dick Endowment Fund

Frank Dick

### Early Childhood Development Fund



James & Suann Hammersmith  
Pat & Mary Vallad

### Friends of Tecumseh Schools Orchestra Fund

James & Emily Anderson  
Narinder & Sonia Batra  
Christopher & Monica Bauer  
Norm & Margaret Bless  
Gordon & Karen Cleere  
Cunningham Vision Centers  
Frank & Sue Garcia  
James & Suann Hammersmith  
Jim & Jan Hammond  
Joseph & Laura Hubbard  
Ives Auto Parts Collision Services  
Robert & Karen Januszek  
Todd & Stacey Knepper  
Kohl's  
James & Joyce Lammers  
Mary Jo Mensing  
Bob & Marcy Miller  
Bryan & Elaine Mincks  
Timothy & Christy O'Brien  
Jesse & Kimberly Otto  
Kevin & Stephanie Packard  
Marvin & Rebecca Peach  
Robert & Pamela Phillips  
John & Jane Poczatek  
Shar Products Company  
Michael & Colleen Sunderland  
David & Renee Swan  
Don & Sharon Taylor  
Tecumseh Big Boy, Inc.  
Tecumseh High School Class of 2012  
Shannon Turner  
Jeremiah & Courtney Villareal  
James & Vera Wahl

Steve & Sheila Wathen  
Jeffrey & Nancy Weatherford  
Jesse Whitney & Sarah Deboever  
Elizabeth Ruthruff Wilson  
Foundation  
Susan Zager-Martin

### Friends of the Adrian Public Library Fund

Tom Adams  
Kathryn Allingham  
Khamis & Marcia Al-Omari  
Edwin & Mary Lou Balasz  
Donald & Leslie Carpenter  
Dennis & Marjorie Castle  
Lois Curtis  
Robert Freligh  
Erik Gable  
Bob & Rhonda Gage  
John & Elfriede Georgal  
Lyle & Sandra Gerhart  
Dana & Lisa Gillin  
David & Ann Guldin  
James & Suann Hammersmith  
Timothy Heermann  
Michael & Nancy Herr  
Rita Holmes  
Jeffrey & Barbara McNally  
Paul & Diane Meyers  
Marty & Annette Nichols  
Helen Peshke  
Robert & Carillon Ritz  
Carol Rockwell  
Wendy Rockwell  
Terry & Nancy Salomonson  
Dorothy Schmidt  
Barbara Sell  
Sherman and Julie Shultz  
Chereese Simpson  
Don & Sharon Taylor  
Felipe & Laura Terrones  
Paula Trentman  
Jon & Pam Wetherbee

### Friends of the Southern Michigan Railroad Society Endowment Fund

Dorothy Delker  
Melvin Dickerson  
Holly Montgomery  
Pfizer Foundation Matching Gifts Program  
Louis & Sharon Putman

### Lenawee Leadership Fund

Scott & Holleigh Baker  
Thomas Barto  
Robert & Muriel Bell  
Mitch & Dawn Blonde  
Gerald & Pam Burg  
Consumers Energy  
Catherine Cook & Bill Klasner  
Council of Michigan Foundations  
Frank Dick  
John & Susan Gruel  
James & Suann Hammersmith  
Kevin & Korinne Marti  
James & Debra Peters  
Points of Light Foundation  
Sage Foundation  
SEDCO  
Cletus Smith  
Paula Trentman

### Patrick Gill Empty Bowls Fund

Lana Archer  
Michael Clement  
Pat & Kim Gill  
James & Suann Hammersmith  
Paula Trentman

### Goodwill Industries of South-eastern Michigan Endowment Fund

Phil Downs & Vicki Carpenter  
James & Suann Hammersmith



Stephen & Beverly Lyell  
Larry & Cindy Opelt  
Arlo & Janice Qualley  
Patricia Tipping

### Ernest & Susan Groeb Charitable Fund

Ernie & Susan Groeb

### David & Shelley Hickman Endowment Fund for the Lenawee Community Foundation

James & Suann Hammersmith  
Paula Trentman

### Robert & Marjorie Hodapp Fund

Marjorie & Payge Hodapp

### Homeless Education Fund

Leslie Anderson  
Stephen & Connie Breitenbach  
Betty Chormann  
Jane Clark  
Julie Cruz  
Friends of Berryman  
Jim Gartin  
Julie Goll  
Harvey & Betty Hawkins  
David & Shelley Hickman  
Robert & Karen Januszek  
Paul & Sarah Jesuale  
Kiwanis Club of Blissfield  
David & Brenda Knapp  
Julie Koehn & Tom Valentine  
Lenawee Intermediate School District  
Paul & Diane Meyers  
Maher & Wafa Sader Mualla  
Douglas Myers  
Pamela Myers  
North Shore Marine  
Onsted Community Schools  
Ric & Jeanne Patterson  
William & Deborah Rhodabarger  
Christopher Thie  
Wacker Chemical Corporation  
WLEN

### HOPE Community Center Endowment Fund

Phil Downs & Vicki Carpenter  
James & Suann Hammersmith  
Joel G. Rodriguez  
Pat & Mary Vallad

### Hunters Helping Lenawee Fund

James & Suann Hammersmith  
William & Deborah Rhodabarger  
Paula Trentman  
Whitetails Unlimited, Inc.



**Imagination Library Fund**

Michael & Regina Beagle  
 Daniel & Christine Buron  
 Chuck & Betty Gross  
 James & Suann Hammersmith  
 Gary Haviland  
 David & Shelley Hickman  
 Nancy Jenkins  
 Lenawee Intermediate School District  
 Paul & Diane Meyers  
 Barb Sund  
 Paula Trentman  
 Christophe & Erin VanDyke

**Kellogg Youth Fund**

Adrian Rotary Club  
 James & Suann Hammersmith  
 Barb Sund  
 TLC Community Credit Union  
 Paula Trentman

**LCEF - Eric Brandeberry Memorial College Scholarship Fund**

Adrian Steel Company

**LCEF - Francoeur Scholarship Fund**

Judith C. Francoeur

**LCEF - Lenawee County Association of Realtors Scholarship Fund**

Lenawee County Association of Realtors

**LCEF - Matthew D. Lips Memorial Scholarship Fund**

Terry & Deborah Elliott  
 Douglas & Barbara Gillies

**LCEF - Pauline & Sebastian Pizana Memorial Scholarship Fund**

Bill & Ann Knisel

**LCEF - Poppink Scholarship Fund**

Joseph & Martha Poppink  
 Melcher

**LCEF - Lloyd W. Ruesink Memorial Scholarship Fund**

Priscilla Jackson

**LCEF - Stubnitz Arts Scholarship Fund**

Thomas & Catherine Royer

**LCEF - John Wyatt Sr. Memorial Community Service Scholarship Fund**

Debra Austin  
 C & J Pallets, Inc.  
 Diane Dalton  
 James & Elizabeth Dumoulin  
 Godlan, Inc.  
 Kent & Melody Lutzke  
 Nichols  
 Ronald & Kay Reeves  
 Venchurs, Inc.

**LCEF - Joan & Lysle Yeutter Scholarship Fund**

Joan Voorhees Yeutter

**Lenawee College Access Network Operating Fund**

Charles & Kim Coberley  
 James & Suann Hammersmith  
 Paula Trentman

**Lenawee Community Mental Health Authority Endowment Fund**

James & Suann Hammersmith  
 William R. Myers  
 Jody Raus

**Lenawee County Fair & Event Grounds Endowment Fund**

Rex & Susan Reinink

**Lenawee County Sobriety Court Fund**

Clifton Truck Insurance Agency  
 Lenawee County

**Lenawee Fund**

Stanley & Bridget Ames  
 Joe & Patricia Baker  
 Thomas Barto  
 Charles & Kimberly Berrington  
 David & Shiela Blough  
 Jane Boeve  
 Donald & Elaine Brighton  
 Terrence & Carol Collins  
 Catherine Cook & Bill Klasner  
 Faust Real Estate  
 Norman & Sally Glasser  
 Janet Goulart  
 James & Suann Hammersmith  
 F. Denver Hedge  
 John Hollenbeck  
 Robert & Karen Januszek  
 Phil Joannis  
 William Kring  
 Dave & Jeanette Maxwell  
 Lowell Oberhaus  
 James & Amy Philp  
 Dennis & Denise Shelle  
 Alden F. Smith  
 Kyle Thompson  
 Floyd & Geraldine Tucker  
 Corbie & Mary Wells  
 Harley & Teke Westfall

**Lenawee Great Start Fund**

Adrian Breakfast Lions Club  
 Verla Albring  
 Jay & Kay Barber  
 Paul & Mary Barber  
 Elem3nt Church  
 Gordon & Judith Roes Hammerle  
 Lenawee Intermediate School District  
 James & JoAnn Singles  
 Eryn & Deana Smith  
 Sprouts Learning Center

**Lenawee Lifelong Learning**

Adrian Rotary Club  
 Trudy Bower  
 Gerald & Pam Burg  
 Florence Carter  
 Robert & Jane Clark

Del & Nancy Cochran  
 Carol Coston  
 Marita Cremeans  
 Gregory & Deborah DuMars  
 Gail Dunaway  
 Keith & Margaret Earl  
 Patricia Fischer  
 Stephen & Linda Freeborn  
 Jackie Freeman  
 Robert Freligh  
 John & Elfriede Georgal  
 Marilyn Kremer  
 Sandra Lewin  
 Frances Lombaer  
 Paul & Diane Meyers  
 Marsha Miller  
 Samuel & Eleanor Mitchell  
 Esther Ortega  
 Howard Pennington  
 Linda Rice  
 William & Barbara Ross  
 Jeanne Sheldon  
 David & Carolyn Siler  
 Joseph & Susan Sitterly  
 Jeff & Jane Stickney  
 Patricia Stafford Sturk  
 Don & Sharon Taylor  
 Thomas & Gail Thelen  
 Pat & Mary Vallad  
 Janice Weakland

**Madison School District Endowment Fund**

James & Deanna Hartley  
 James & Doris Shaffer  
 John & Margaret Shaffer

**Mirelez Living Legacy Music Scholarship Fund**

Elizabeth Ruthruff Wilson  
 Foundation

**Montessori Children's House of Lenawee Fund**

Anonymous  
 Matt & Laura Bell



Brian & Stephanie Boyse  
 Brazeway, Inc.  
 Victor & Allie Cherfan  
 Devils Lake Appraisals  
 Frank Dick  
 First Federal Bank  
 Fraternal Order of Eagles  
 Rick & Jan Gurdjian

Stephen L. Hickman Family Foundation  
 Holy Family Clinic  
 Charles & Anne Jameson  
 Doug & Mary Kapnick  
 Harvey & Natalia Koselka  
 Paul & Anita Lanczki  
 Orville D. & Ruth A. Merillat Foundation  
 Jake & Erin Pifer  
 Joseph & Christy Pino  
 Kimberlee Priestap  
 Frank & Jody Rhames  
 Richard & Linda Ridley  
 Sheila Schwartz  
 St. Joseph Academy  
 Valorie Veld

**Morenci Area Fund**

Jody Raus

**One Lenawee Fund**

Adrian Insurance Agency, Inc.  
 Three Anonymous Donors  
 Allan & Julie Brittain  
 Stanley & Karen Caine  
 Frank & Shirley S. Dick  
 Endowment Fund  
 Gregory & Deborah DuMars  
 James & Debbie Lawson  
 Dave & Jeanette Maxwell  
 Chris & Joyce Miller  
 Jeffrey & Mary Pardee  
 Rick Richardson  
 Venchurs, Inc.  
 Joseph & Paula Williams

**Onsted Area Fund**

Charles & Kim Coberley  
 Calby & Lindsay Garrison  
 Ernest & Susan Groeb Charitable Fund  
 Wade & Colleen Pelham

**Onsted Community Schools Foundation Fund**

Charles & Kim Coberley  
 Harold & Marian Drake  
 Calby & Lindsay Garrison

**Patriot Youth Sports Fund**

Brazee Safety & Security, Inc.  
 Britton Parks & Recreation  
 Maska Farms  
 Reau Manufacturing Company  
 TLC Community Credit Union

**Raisin Valley Land Trust Fund**

James Leslie & Debra Hoffmaster

**Romney Fund**

James & Suann Hammersmith  
 Paula Trentman

**The Brenda Ross Fund**

Civitan of Lenawee  
 Frank & Shirley Dick  
 Montiel Dull  
 Gregory & Deborah DuMars

## List of Contributors (continued)

Edward & Rosalie Gordon  
Don & Regina Howard  
Bill & Bob Ross  
Robert & Pauline Shirk  
Roger Wagner  
Gerald & Janet Wing

### **Rotary Club of Adrian-Morning Spendable Fund**

Adrian Steel Company  
Bruce & Beth Caswell  
Frank & Shirley Dick  
James & Linda Feeney  
Vince & Mary Ann Lysaght  
United Bank & Trust

### **Sand Creek Community Schools Endowment Fund**

Larry & Elizabeth Thompson

### **Tecumseh Area Soccer Club**



### **Fund**

Linda Casteller  
Remo & Wanda Casteller  
Marie McCafferty  
William & Deborah Rhodabarger

### **Tecumseh Center for the Arts Endowment Fund**

Stan & Carol Legenc  
Rex & Susan Reinink  
Pat & Mary Vallad

### **The Tecumseh Coalition for Youth Fund**

Kevin & Marvic Welch

### **Tecumseh District Library Endowment Fund**

S. Gayle Hazelbaker  
Barbara Hunt  
Stan & Carol Legenc  
Tecla Loup  
Mark & Sharon Miller

Rex & Susan Reinink  
J.A. & Suzanne Samelak  
John & Anne Walker  
David & Carolyn Wollenhaupt

### **Tecumseh Historic Carnegie Library Fund**

Bird & Co., Inc.  
First Federal Bank  
Douglas & Barbara Gillies  
Shirley Herrick  
Yvonne Morningstar  
Murray Family Fund

### **Weekend Snack Sack Fund**

Susan Deemer  
James & Sue Hammersmith  
Meijer, Inc.  
David & Stacey Munson  
Paula Trentman

### **Wildcat Athletic Boosters Memorial Scholarship Fund**

Lee & Donna Andre  
Anonymous  
Donald & Nancy Bailey  
Deanna Birdyshaw  
Glen Bishop  
Brooklyn Sportsmens Club, Inc.  
Eugene & Janet Deuel  
Timothy & Anne Etue  
Bob & Kathy Frazier  
Connie Frazier  
James Garner  
Neal & Toni Garrison  
Jesus & Shirley Garza  
Kevin Girrback  
Ernie & Susan Groeb  
Ron Hall & Loretta Giacomini  
Stephen & Martha Hall  
N. & C. Haseley  
Thomas & Alysia Hubbard  
JSA Trucking  
Kappa Sigma Alpha Sorority  
Frank & Patricia Krawczyk  
Christina Krawczyk-Miller  
Nicole Lamb  
Bradley & Marjorie Martin  
Willie & Harian McKnight  
Michigan State Police  
Al & Anne Moore  
Richard & Lucy Oldfield  
William O'Sullivan  
Emerson & Christine Parks  
Jane Pontious  
Karen & Vance Powell

Rick Richardson  
Karen Ricketts  
David & MaryAnn Rockwell  
Lloyd & Jodi Rulli  
Kyle & Sheila Sanborn  
Steve & Cheryl Stout  
Sherrie Vaughan  
Wacker Chemical Corporation  
Wildcat Athletic Boosters

### **Kassie Wingerd Scholarship Fund**

Grey Fox Floral  
Lenawee-Christmas Insurance Center, Inc.  
David & Pamela Pray  
Jan Rizzo DDS  
Scotty's Body Shop  
Josephine Weeden DDS

### **YMCA of Lenawee County Endowment Fund**

James & Suann Hammersmith

### **Zonta Service Fund**

Adrian Family Dentistry  
Anonymous  
James & Rachel Becker  
Michael & Michele Buku  
James & Ruth Cole  
Russell & Cathy Davis  
Dempsey & Dempsey



John & Julie Field  
Gray Institute for Functional Transformation  
Groeb Farms  
Gurdjian Insurance Group, Inc.  
Inad & Liliane Haddad  
Therese Haggerty  
Gordon & Judith Roes Hammerle  
Kara Harris  
Horizon Travel & Cruises  
Kemner-Iott Agency, Inc.  
KeyBank National Association  
Kriehoff-Lenawee Company  
John Lark  
LENCO Credit Union  
Michigan Oral & Maxillofacial Surgeons  
Maher & Wafa Sader Mualla  
Beth Myers  
John & Jean Osborn  
Bob & Maureen Stephan  
United Bank & Trust  
Sharon Weber  
Wheelock Pharmacy



Please be assured that every effort has been made to assure accuracy in the list of contributors. If you are aware of an omission or correction, please contact Sue at the Lenawee Community Foundation at 517.423.1729 or [shammersmith@ubat.com](mailto:shammersmith@ubat.com).







# The Legacy Society

**W**hen you begin a family charitable endowment, chosen heirs will have the privilege of expressing your family values by recommending grants. This priceless experience will change not only their lives, but also the lives of local residents. Your legacy of caring will live on.

When you choose to leave a gift to the Lenawee Community Foundation to an existing fund or to a fund you create, the Lenawee Community Foundation will follow your directives and make sure the gift is used exactly as you intend - For **good**. For **ever**.

The A.J. Smith Recreation Center was funded by the Ruth V. and Ruth Anne Thompson Fund at the Lenawee Community Foundation.



*"Grandma would have loved it!"*

Karen Thompson,  
granddaughter of Ruth V. Thompson

## Ruth V. and Ruth Anne Thompson

John R. and Ruth V. Thompson moved to Tecumseh in 1932 when John was retained to run United Savings Bank, the forerunner of United Bank & Trust. A group of local businessmen secured approval and raised the money to reopen United after the bank holiday of the Great Depression.

Mr. and Mrs. Thompson had 2 children. John was a physician, who worked in Lenawee County a short time. Ruth Anne lived at home and never married. She worked as a bank clerk, and enjoyed reading and classic movies.

The Thompson family was very thrifty and made good investments. They also invested their time in their community – Tecumseh – with the Presbyterian Church, Service Club, Garden Club, and the Tecumseh Community Fund Foundation.

After both John R. and Dr. John had passed away, Mrs. Thompson enlisted attorney Emmet Egan to review the estate plans for her daughter and herself. Their desire was to give back to the Tecumseh area, where they had lived and worked.

Mr. Egan recommended charitable remainder trusts that had both short and long term tax advantages, protected their income during their lives, and met their desire to help their adopted community.

At the urging of Mr. Ray Herrick, Mr. Egan had been instrumental in establishing the Tecumseh Community Fund Foundation, the forerunner of the Lenawee Community Foundation. The Foundation mission and goals met the desires of the Thompsons', so charitable remainder trusts were established with a portion of Ruth V.'s and Ruth Anne's assets in the late 1970's.

Ruth V. passed away, and subsequently Ruth Anne passed away in March of 2006. Their bequests to the Lenawee Community Foundation totaled nearly \$4.8 million from which the investment earnings will be utilized for grants to benefit the Tecumseh area **for good for ever.**



Ruth V. Thompson



Ruth Anne Thompson

### Sample Language for Your Will or Trust

As your advisor and you draft your estate plan or will, please remember the Lenawee Community Foundation – no matter how large or small your bequest. Following are some statements that can be used.

**General or Specific Bequest** – “I give, devise and bequeath to the Lenawee Community Foundation the sum of \$\_\_\_\_ (or \_\_\_\_ %) from my estate.

**Remainder of Estate** – “After all specified bequests have been made I give, devise and bequeath to the Lenawee Community Foundation all (or \_\_\_\_ %) of the remainder of my estate.

**Contingent Bequest** – “I give the residue of my estate to \_\_\_\_\_ family member. If that person does not survive me, I give the residue of my estate to the Lenawee Community Foundation.”

*Please let us know if you have included the Lenawee Community Foundation in your estate plan or will. For further information contact Sue Hammersmith at 517-423-1729 or [shammersmith@ubat.com](mailto:shammersmith@ubat.com).*

*“We are so fortunate that the Lenawee Community Foundation is committed to continuously improving the future of our community. Thank you for this fantastic gift.”*

Tecumseh Parks and Recreation  
Advisory Board

## The Legacy Society (continued)

We are appreciative of the following persons, who have left a bequest by establishing a fund in the Lenawee Community Foundation or leaving an unrestricted gift to the Lenawee Community Foundation for the future of our community.

Earl E. & Lenore C. Bedore  
Richard P. Boyd  
Florence M. Bridleman  
Bernice I. Duncan  
Sam Hamilton  
Dr. Ralph & Harriet Helzerman  
Bertha M. LaPointe  
Max Larsen  
Walter J. & Leota ("Tom") R. McNeil  
Marian J. Rozelle  
Ruth V. & Ruth Anne Thompson  
Willard D. VanTuyle



Our deepest gratitude is extended to the members of The Legacy Society, who have made arrangements for planned gifts to the Lenawee Community Foundation. Their willingness to add their names to the list enables us to include them at Foundation events, thank them personally and assure that their wishes are in the Foundation's permanent records. We hope their actions will inspire you to join with them and build a better community. It is the opportunity of your lifetime.

*Mitchell P. & Dawn M. Blonde*  
*Dr. Carlton & Lynn Cook*  
*Frank & Shirley Dick*  
*Merlyn & Myrna Downing*  
*Donald W. Garmon*  
*Bruce & Susan Goldsen*  
*Charles H. & Margaret Gross*

*James & Suann Hammersmith*  
*David S. & Shelley Hickman*  
*Thomas & Ellen Hummel*  
*David A. & Linda A. Lips*  
*David E. & Jeanette Maxwell*  
*Mark Prielipp & Kathryn Mohr*  
*Cindy Tomlin*



“He who plants a tree  
provides kindness for  
many generations, and  
faces that he has not  
seen shall bless him.”

Henry Van Dyke



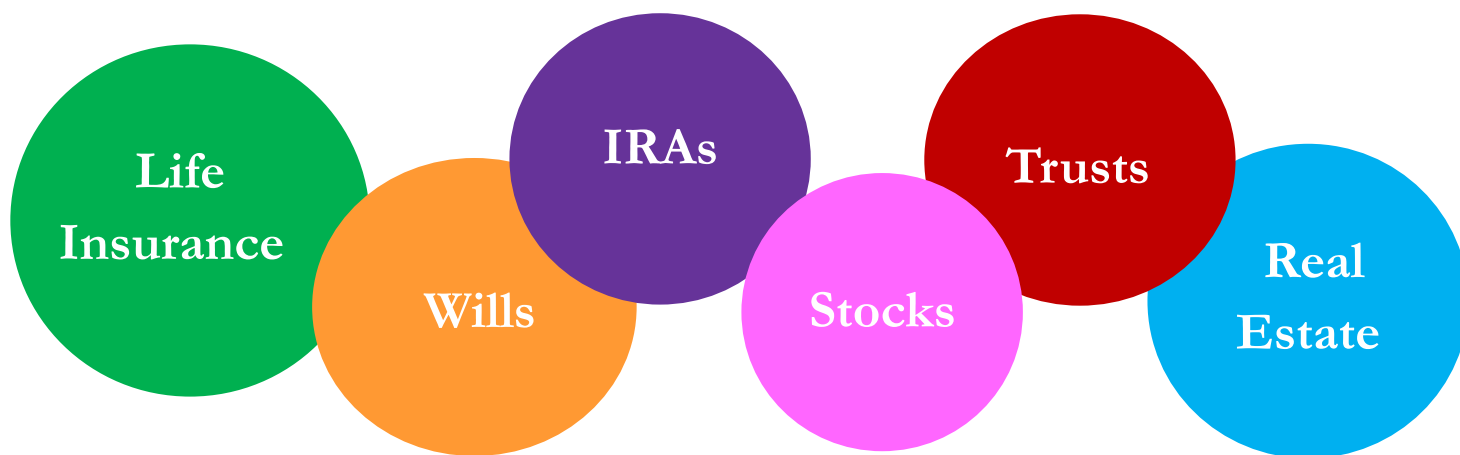
# Building a Better Community Through the Lenawee Community Foundation

The Lenawee Community Foundation assists individuals, businesses, communities and organizations in achieving their charitable goals for our community.

## What are the benefits of building a better community in partnership with the Lenawee Community Foundation?

Supporting the Lenawee County community and its future is the key reason most contributors choose to give through the Lenawee Community Foundation. Other advantages include:

- Donor Focus - The Foundation provides tools and resources to make giving easy and flexible.
- Local Expertise - Grants are targeted for the maximum benefit for our community. We closely monitor community needs, opportunities and resources, and are willing to assist donors in making their giving as impactful as possible.
- Permanence - Most gifts to the community foundation are endowed to last and make a local impact forever.
- Accountability - Board and staff members assure accountability to the community through sound financial and investment policies and management, including professional investment managers and an annual audit.
- Economies of Scale - Although each fund has its own identity, purpose and data tracking, funds are pooled for investment purposes. This reduces risk, maximizes performance and lowers overhead costs for each fund. There are many ways to contribute and accomplish one's charitable objectives, while minimizing paperwork that individuals might have to do on their own.
- Tax Advantages - Federal tax deductions are available to donors who itemize.
- Community Leadership - The Foundation is governed by local community leaders, who nurture giving, stewardship and volunteerism.



## What are Some Ways to Contribute?

The Lenawee Community Foundation recognizes that each individual, family, organization or corporation with whom we work has unique charitable interests and financial circumstances. Your attorney, financial planner, insurance agent, accountant or trust officer can assist you in determining the methods that will achieve your charitable goals, while receiving the maximum tax and legal advantages allowed for your gift. You may also contact the Lenawee Community Foundation at 517.423.1729 for further assistance.

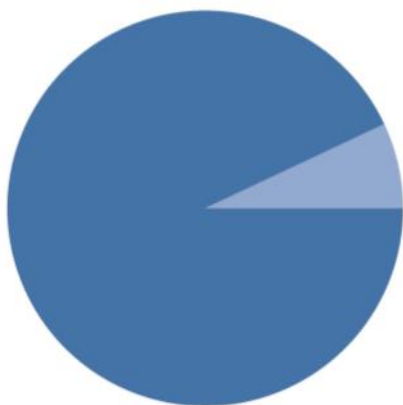
# Financial Position

as of September 30, 2012

## Annual Investment Performance

	Endowment Portfolios	Benchmarks
9/30/12	19.85%	18.33%
Three Years	9.67%	9.23%
Since 1/1/06	4.93%	4.58%

Program Expenses  
92.5%



Fundraising & Administrative Costs  
7.5%

*The Lenawee Community Foundation is a nonprofit corporation exempt from income tax under Section 501(c)(3) of the Internal Revenue Code. The financial statements are prepared on an accrual basis of accounting. Under this method, revenues are recognized when earned and expenses are recognized when incurred.*

*A certified audit was conducted by Robertson Eaton & Owen, P.C. For a copy of the audit report, contact the Lenawee Community Foundation at 517.423.1729.*

## ASSETS

Cash value of life insurance policies	\$	421
Construction in Progress		1,379,336
Investments - short term		804,621
Investments - long term		16,316,762
Real estate/furniture & fixtures		460,000
Less: accumulated depreciation		(2,827)

**Total Assets** \$ **18,965,901**

## LIABILITIES & NET ASSETS

Accrued expenses	\$	11,719
Construction Loan Payable		1,379,336
Charitable gift annuity payments		752,773
Funds held in agency capacity		1,444,262
Total liabilities		3,615,090
Unrestricted net assets		483,828
Temporarily restricted net assets		13,002,123
Permanently restricted net assets		1,864,860
Total net assets		15,350,811

**Total Liabilities & Net Assets** \$ **18,965,901**

## REVENUES & OTHER SUPPORT

Contributions	\$	716,201
Grant		45,366
Contributed materials & facility		19,200
Contributed services		76,200
Interest & dividends		400,578
Other fee/fundraiser income		44,933
Realized gains/(losses)		219,245
Unrealized gains/(losses)		1,989,080
Subtotal revenues & other support		3,507,203
Less: amounts allocated to agency activity		(761,236)

**Total Revenues & Other Support** \$ **2,745,967**

## EXPENSES

Scholarships	\$	83,255
Grants and charitable distributions		1,383,518
Volunteer Generation grant program		50,718
General & administrative		83,811
Fundraising		39,930

Subtotal expenses 1,641,232  
Less: amounts allocated to agency activity (711,797)

**Total Expenses** **929,435**

Change in net assets 1,816,435

Net assets at beginning of year 13,534,279

**Net Assets at End of Year** \$ **15,350,811**

# Acknowledgments

Our deepest appreciation is extended to the many volunteers who have given their time and talents to benefit the Lenawee Community Foundation.

## Board of Directors

David S. Hickman  
*Chair*

Charles H. Gross  
*Vice Chair*

Scott Hill  
*Secretary*

James Kapnick  
*Treasurer*

Dr. Carlton Cook  
Charlotte Coberley  
Frank Dick  
Sue Goldsen  
Jack Patterson  
Kris Schmidt  
Bob Vogel  
Spenser Warren

*Directors Emeriti*  
Merlyn Downing  
Dave Maxwell

## Audit Committee

Bob Vogel, *Chair*  
Carlton Cook  
Scott Hill

## Development Committee

David S. Hickman, *Chair*  
Frank Dick  
Charles H. Gross  
Scott Hill  
James Kapnick

## Executive Committee

David S. Hickman, *Chair*  
Charles H. Gross  
Scott Hill  
James Kapnick

## Investment Committee

Jeff Kuhman, *Chair*  
Stan Ames  
Stan Caine  
David S. Hickman  
Jeff Patterson

## Marketing Committee

Sue Goldsen, *Chair*  
Paul Heidbreder  
Diane Hurlbut  
Julie Koehn

## Volunteers with the Foundation Office

Dustin Face  
James Hammersmith  
Jessica Irwin  
Alissa Reeder  
Theresa Rupley  
Barb Sund

## Area Community & Grant Committee Volunteers

Jeff Armstrong  
Dawn Bales  
Frank Bolak  
Garry Clift  
Kim Coberley  
Carlton Cook  
Jim Decker  
Cheryl Duval  
Candace Ehinger

Deb Elliott  
Mark Gasche  
Dean Gassert  
Sue Goldsen  
Ernie Groeb  
Chuck Gross  
Rick Gurdjian  
Jim Hartley  
Mike Herr  
Dave Hickman  
Scott Hill  
Jackie Hubbard  
Jim Kapnick  
Orena Kidder  
Julie Koehn  
Dave Maxwell  
Carl Meddick  
Chris Miller  
Esther Myers  
Jeff Pardee  
Bud Pelham  
Warren Peterson  
Larry Richardson  
Theresa Rupley  
Shane Smith  
Carol Souchock  
Martina Tjolsen  
Tina Trumbull  
Bob Vogel  
Greg Wicking

## PROGRAM VOLUNTEERS

### Health Across Lenawee

Bob Barringer  
Jerri Baucher  
Matthew Baucher  
Nancy Bishop  
Chelsey Boss  
Susie Dice  
Cindy Frownfelder  
Elaine MacDonald  
Chris Miller  
Nate Parker  
Rotary Club of Adrian Morning  
Carol Souchock  
Don Taylor  
Chris Timmis  
Scott Whitehouse

## Hunters Helping Lenawee

Kristen Bissell  
Vern Fry  
Scott Hill  
Mike Houghton  
Bill Rhodabarger  
Laura Schafer  
Bob Vogel  
John Wanke

## Lenawee Imagination Library

Shelley Hickman, *Chair*  
Gayle Hazelbaker  
Kyle Hoffman  
Jody Howard  
Carol Souchock

Special Thanks to **United Bank & Trust** for the bank's generous donation of equipment, services and office space in its Wealth Management Group building.

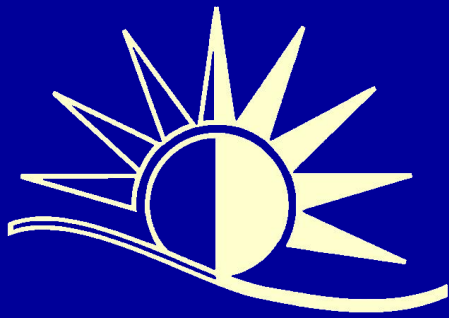


Joe Williams, Lenawee President, United Bank & Trust receives appreciation from Sue Hammersmith, President & CEO, Lenawee Community Foundation.

**You live here. Lenawee County is your home.**  
**No one cares about Lenawee as much as you and other residents here.**  
**You have an opportunity to help your neighbors today, and create a healthier future for Lenawee.**  
**What will your legacy be?**  
**Please consider including the Lenawee Community Foundation in your will or estate plan.**  
*For good. For ever.*



Executive Committee Members (from left) Dave Hickman, Chuck Gross, Jim Kapnick and Scott Hill



**Lenawee**  
community foundation™  
For **good.** For **ever.**™



Sue Hammersmith  
*President & CEO*

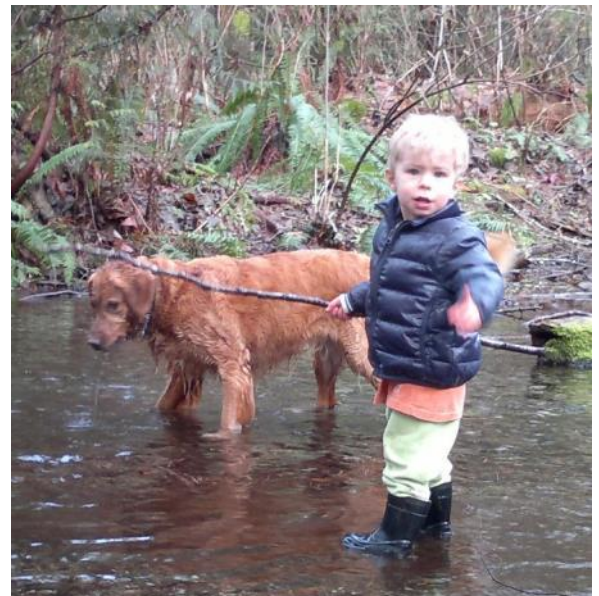
Jessica Foster  
*AmeriCorps\*VISTA*

Janel Garno  
*Accountant*

Cynthia Heady  
*Project Coordinator*

Karen Januszek  
*Donor Services and  
Information Systems Coordinator*

Paula Trentman  
*Program Manager*



Office location: United Bank & Trust  
Wealth Management Office  
603 North Evans Street  
Post Office Box 142  
Tecumseh, Michigan 49286

Phone: 517.423.1729  
Fax: 517.424.6579

Email: [shammersmith@ubat.com](mailto:shammersmith@ubat.com)  
Website: [www.lenaweecf.com](http://www.lenaweecf.com)

MICS 2897